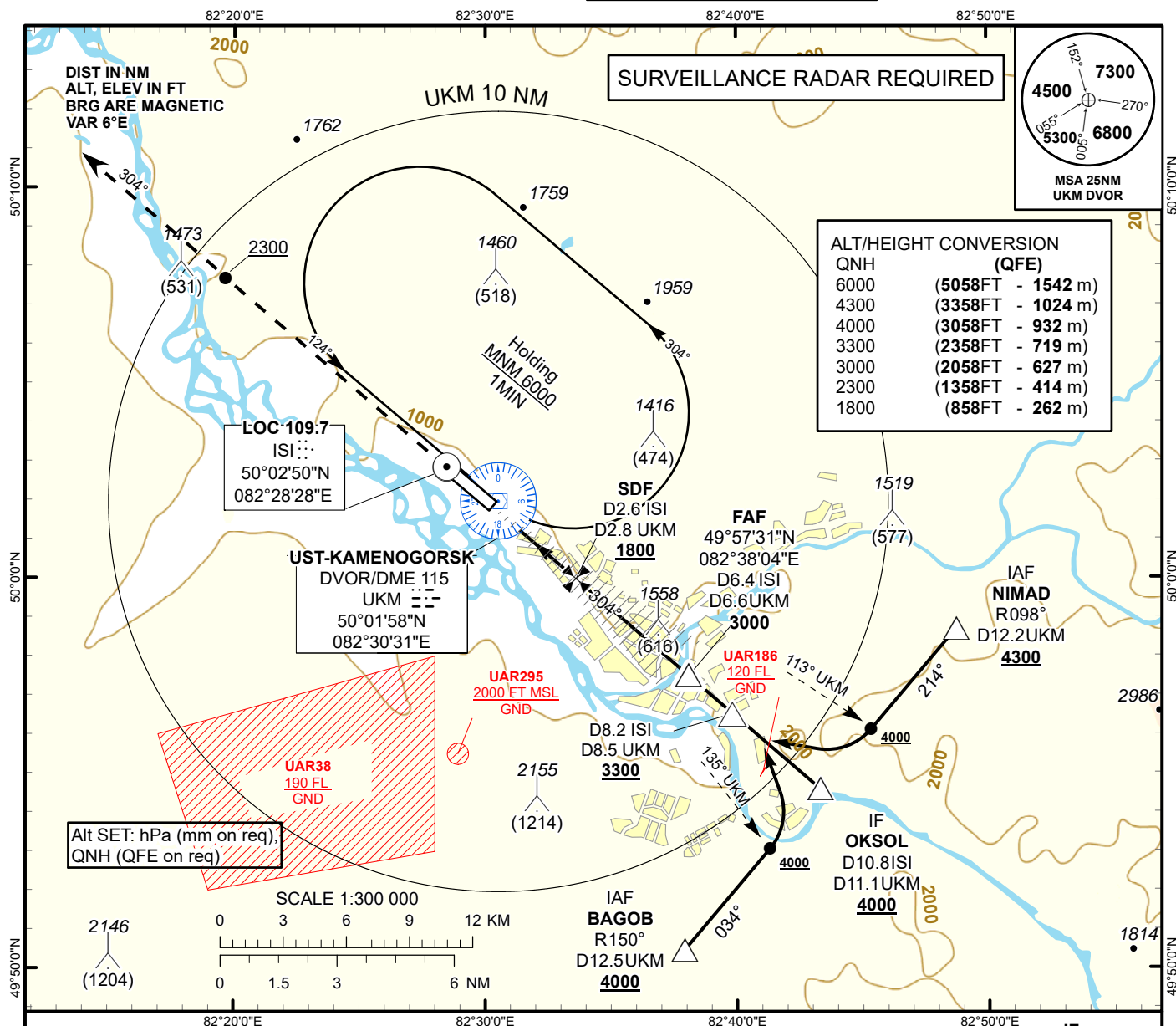


INSTRUMENT
APPROACH
CHART - ICAO

AERODROME ELEV **942FT**
HEIGHTS RELATED TO
AD ELEV

UST-KAMENOGORSK TOWER 130.1
UST-KAMENOGORSK ATIS (EN) 124.2
UST-KAMENOGORSK ATIS (RU) 127.7

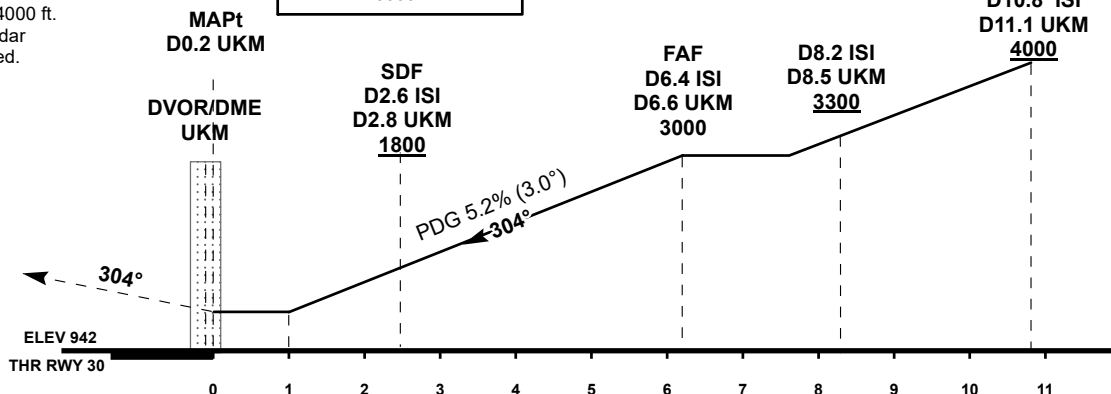
UST-KAMENOGORSK
LOC/DME
RWY 30



MISSED APPROACH

Climb on track 304° to 4000 ft.
After passing 2300 ft radar
vectoring will be provided.

TRANSITION ALT
10000



CHANGE: New chart.

Aircraft Category		A	B	C	D	DIST to THR DME ISI	NM	6.4	6	5	4	3	2	1
Straight-in Approach OCA/H	LLZ (GP INOP) SDF	1320(370)	1320(370)	1320(370)	1320(370)	DME UKM	NM	6.6	6.2	5.1	4.1	3.1	2.1	1.1
	LLZ (GP INOP) WO SDF	1820(870)	1820(870)	1820(870)	1820(870)	ALTITUDE	FT	3000	2890	2570	2250	1940	1630	1320
						HEIGHT	FT	(2058)	(1948)	(1628)	(1308)	(998)	(688)	(378)
Aerodrome Operating Minima DH ft x RVR (CMV)		LLZ (GP INOP)				WARNING DME ISI ZERO RANGED TO THR RWY 30 1. Priority landing is performed according to pattern. 2. Heavy turbulence and wind shear may arise on final.								
						GS	Kt	80	100	120	140	160	180	
						FAF-MAPt(6.6NM)	min:sec	4:53	3:54	3:15	2:47	2:26	2:10	
						Desc.Rate(5.2%)	ft/min	420	530	630	740	840	950	

UST-KAMENOGORSK
LOC/DME

AERONAUTICAL DATA TABULATION

LOC/DME approach to RWY30 from NIMAD, OKSOL, BAGOB	
Fix/point	Coordinates
UKM DVOR/DME	50° 01' 58.0"N 082° 30' 31.1"E
(FAF) D6.4 ISI, D6.6 UKM	49° 57' 30.6"N 082° 38' 04.4"E
OKSOL (IF) D10.8 ISI, D11.1 UKM	49° 54' 35.5"N 082° 43' 18.7"E
NIMAD (IAF) R098°, D12.2 UKM	49° 58' 42.2"N 082° 48' 43.5"E
BAGOB (IAF) R150°, D12.5 UKM	49° 50' 28.5"N 082° 37' 54.9"E
THR RWY 30	50° 01' 39.20"N 082° 30' 36.13"E
ISI LOC	50° 02' 49.8"N 082° 28' 28.4"E
SDF	49° 59' 58.6"N 082° 33' 37.8"E
Final approach descent angle is 3°	